

J. A. McClelland & Sons

Estate Agents • Auctioneers • Valuers • Rural & Land Agents

FOR SALE
OLD GLENARM ROAD
DRAINS BAY
LARNE



**c. 59.81 ACRES OF GOOD QUALITY CUTTING & GRAZING
LAND IN A SCENIC COASTAL LOCATION**
(IN ONE OR TWO LOTS)

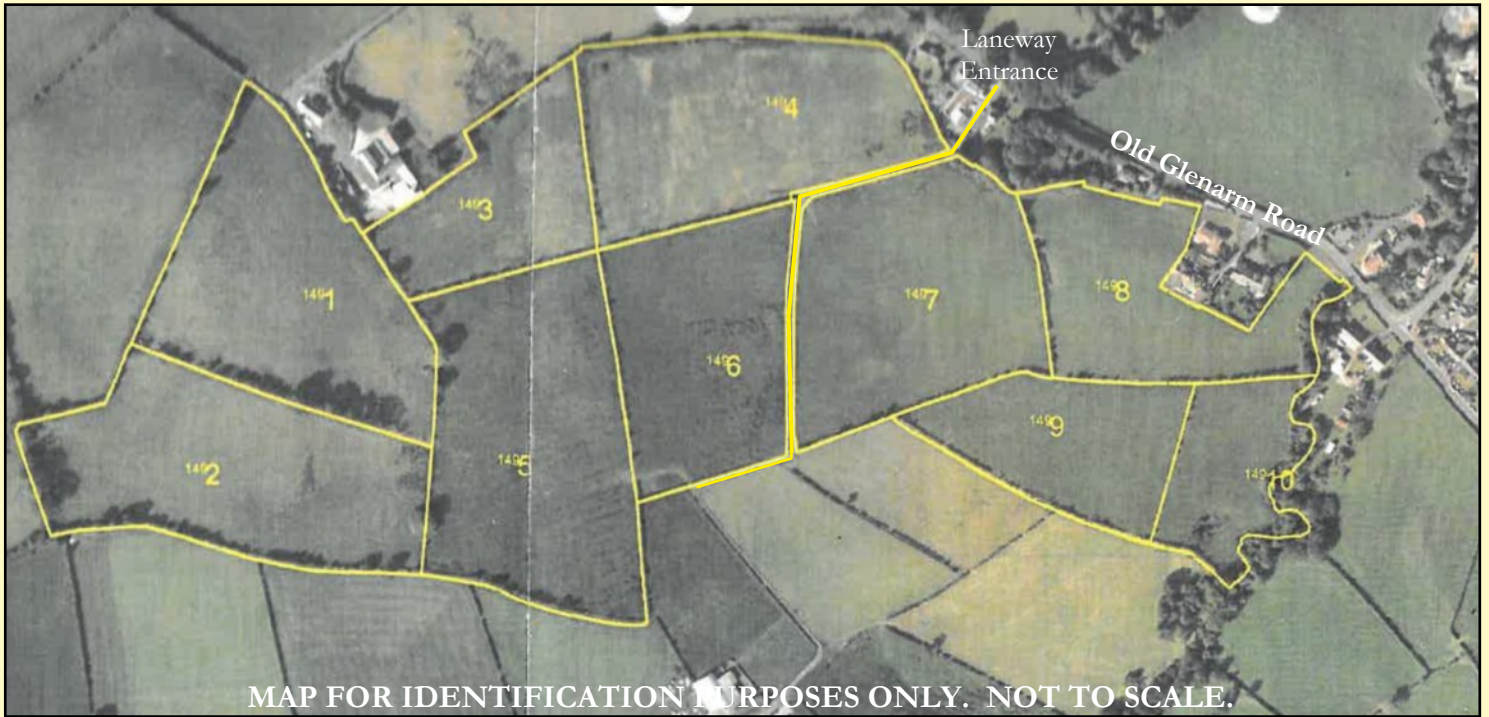
The lands extend to circa 59.81 acres, all held in a compact block with access via an intersecting shared laneway from the Old Glenarm Road. Fields are in the majority fenced for stock and a natural water supply is available to some fields. No BPS entitlements are available for transfer. This is an attractive block of land in a convenient coastal location, close to Larne with impressive distant sea views. Early inspection is recommended.

PRICE: O.I.R.O. £625,000

VIEWING: Anytime

www.jamcclelland.com

Farm Map



Field Schedule

Field Number	Hectares	Acres
1	3.061	7.563
2	3.167	7.825
3	1.588	3.923
4	2.982	7.368
5	3.43	8.475
6	2.311	5.71
7	2.936	7.254
8	2.031	5.018
9	1.577	3.896
10	1.126	2.782

Source: DARD measure 2012



J. A. McClelland & Sons

Estate Agents • Auctioneers • Valuers • Rural & Land Agents

Ballymena Livestock Market, Unit 1 Woodside Road,
Ballymena, Co. Antrim BT42 4QJ

Tel: 028 9335 2727 Email: sales@jamcclelland.com

www.jamcclelland.com

AGENT'S NOTES

J A McClelland & Sons Ltd and their clients give notice that:

1. They have no authority to make or give any representations or warranties in relation to the property.
2. These particulars have been prepared in good faith to give an overall view of the property, they do not form any part of an offer or contract, and must not be relied upon as statements of representations of fact.
3. Any areas, measurements or distances are approximate. The text, photographs and plans are for guidance only and are not necessarily comprehensive. It should not be assumed that the property has all necessary planning, building regulation or other consents and J A McClelland & Sons Ltd have not tested any services, equipment or facilities. Purchasers must satisfy themselves by inspection or otherwise.